



AVIATION
THEMED
RENTALS



2 COMPLETE FUSELAGES • 5 SECTIONS

BOEING 737-500

Boeing 737 - 500 Section 1

FlightFlix has 2 complete 737-500 fuselages, including one complete with wings and tail feathers. Both aircraft were last configured as business class commuter for the Guns’N Roses rock band tour to transport personnel between venues.

The aircraft reached its useful service life and was condemned in November 2022. The operator harvested all the useful high value parts for resale. The order of events for this process was as follows:

1. Both aircraft flew there last flights into Kelowna International Airport for a scheduled “heavy inspection” by KF Aerospace.
2. Operator determined the required maintenance to return the aircraft to service exceeded the value of the aircraft.
3. The aircraft was hoisted onto blocks so the landing gear could be removed. All engines, avionics, components, and other high value Items were removed for re-sale by the operator.
4. All hazardous fuels and oils were carefully drained from the airframe.
5. The Remaining fuselages, including the complete and pre-existing cabin interior, was carefully and strategically cut into 30’, 20’ and 30’ sections by Flight Flix and Global Aircraft personnel. The second 737 has the same story but was cut into 40’ and 50’ sections keeping the tail complete.



BOEING 737-500 Available Sections

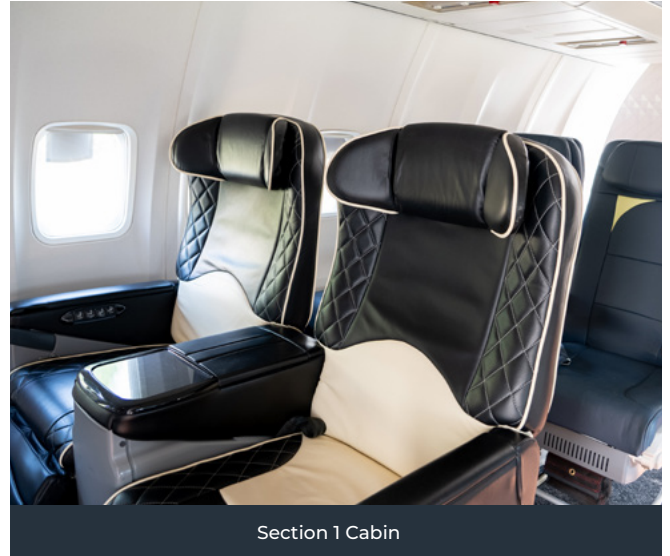
5 sections of 737-500 fuselage, cut out from 2 complete 737-500 airframes.

Section 1

Weighing **8,000lbs** – 30' long x 12.5' wide x 10' tall
(from bottom of steel structure to top of fuselage)



Section 1 Cockpit



Section 1 Cabin

- Includes Cockpit, Galley/lavatory/entrance way, and 15' of cabin.
- [Click on this link to view more pictures of B737.1 - Section 1](#)
- Lower structure cut off below cabin floor and a steel frame added to provide a stable platform while at ground level. Steel frame also provides additional ground handling/lifting options and ease of transport via commercial flat-deck trailer.
- Original switches, dials and pilots flight controls remain installed, all digital displays and instruments have been reproduced from paper cut-outs to reflect original installation. The cockpit appears original.
- 120v lighting strips have been added throughout the cabin and cockpit to replicate in-service aircraft lighting.
- Cabin seating area interior dimensions are 11' wide x 15' long x 7' tall. Currently configured with 3 rows of seating. 2 rows of 3 + 3 "economy class" for 12 passengers, and 1 row of 2+2 "business class" for a total of 16 passengers. All interior finishings are in excellent condition.
- Includes overhead bins.
- Cabin can be arranged in any configuration as required, **all seats, galleys, overhead bins and lavatories are removable.**
- Entrance way includes original LH & RH openable cabin doors with fwd and aft facing galleys fully equipped with all service carts and equipment. Also includes a complete (not functional) lavatory.
- Cockpit is complete with crew seats with original and functional controls, buttons, and dials.
- Open on one end – shrink wrapped to keep weather out
- Fork lifting – requires minimum:
 - » 15,000lb forklift with 10' fork extensions or;
 - » 2 x 5,000 lb forklift -lift from either side or,
 - » 12k Telehandler

Section 2

Weighing 8,000lbs – 20' long x 12.5' wide x 13.5' tall



Section 2 Exterior



Section 2 Interior

- Centre section of fuselage including the landing gear area and fuel tank/wing carry-thru spar.
- [Click on this link to view more pictures of B737.1 - Section 2](#)
- 20' of cabin interior currently configured for commuter seating with overhead bins, seats and side panels.
- Open on **both ends** – no modifications carried out, original full circumference section with emergency exit windows.

Section 3

Weighing 7,000lbs – 30' long x 12.5' wide x 10' tall
(from bottom of steel structure to top of fuselage)



Section 3 Exterior



Section 3 Galley

- Aft section of fuselage includes 25' of cabin interior, aft galley and lavatory. 2 openable aft cabin doors.
- Click on this link to view more pictures of B737.1 - Section 3
- Modified similar to Section 1 with lower fuselage cut-out and steel frame for ease of transport.
- Section 1 and Section 3 could be **joined together** to make a **60' fuselage section**.

Section 4**B737 #2**Weighing **16,000lbs** – **50'** long x **12.5'** wide x **13.5'** tall

Section 4 Exterior

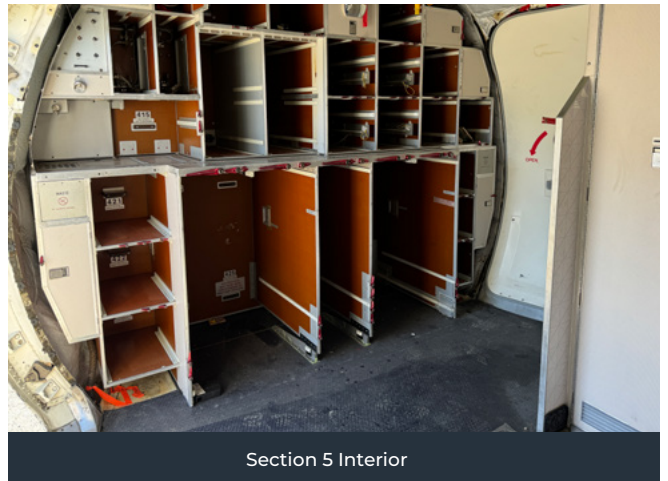


Section 4 Cockpit

- Forward fuselage section of second 737 project.
- [Click on this link to view more pictures of B737.2 - Section 4](#)
- Interior not re-assembled but available and rebuildable
- Complete circumference of original structure including cockpit, forward left and right openable doors, overwing left and right emergency exits, galley/lavatory, 32' of cabin.
- Under floor area includes baggage hold with door, wing carry-thru spar/fuel tank, landing gear section.
- Requires minimum 2 x 12k telehandler or one 50 ton crane to lift.

Section 5**B737 #2**Weighing **11,000lbs** – **41'** long x **12.5'** wide x **13.5'** tall

Section 5 Exterior



Section 5 Interior

- Aft fuselage section of second 737 project, aft part of Section 4 above.
- [Click on this link to view more pictures of B737.2 - Section 5](#)
- Complete circumference of original structure including left and right openable cabin doors, lower baggage area with openable doors.
- Aft structure remains intact allowing attachment of tail feathers including horizontal stabilizers, vertical fin and rudder.

BOEING 737-500 Additional Items

Additional Items of these aircraft include, but are not limited to the following:

- 14 LIKE NEW leather Business class seats – 2 seats/set = seating for 28 people.
 - » Priced at \$800/mth/seat set
 - » DIMS 55" side x 30" deep x 46" tall
 - » Full leather, blue/cream colour, fold out tables, full recliner with foot rest.
- [Click on this link to view more pictures of B737-800 Miscellaneous New Interior](#)
- Multiple galley service carts – priced @ \$300/ea/mth
- Cut-up pieces of fuselage for replicating crash scene
- One dual wheel landing gear – fabricated to replicate detached MLG Assy
- 2 complete 737 wing sections

In addition to the above **we have cabin interior inventory** from a local major airline who purchased several new 737-800 Boeing Max aircraft after original buyers defaulted on the final purchase. These aircraft were re-configured with that airline's interior, **all the factory original interior was removed**, Flight Flix purchased the removed Items.

The following is a summary of these **FACTORY NEW BOEING INTERIOR PIECES**:

- **NEW-NEVER USED** – 2 complete 737-800 Boeing Max ship sets of economy class seating
 - » Priced at \$400/mth/seat set
 - » DIMS – 58" wide x 25" deep x 46" tall
 - » **SET 1 - full leather – BLUE**
 - approximately 60 pieces @ 3 seats/ea = seating for 180 people
 - "in-seat entertainment" panel on seat backs
 - several bulkhead sets with in-seat fold out trays.
 - » **Set 2 – cloth – RED/GREY**
 - approximately 60 pieces @ 3 seats/ea = seating for 180 people
 - NO "in-seat entertainment"
 - several bulkhead sets with in-seat fold out trays.
- **Multiple NEW-NEVER USED** – skeleton seat frames with no cushions
- **Multiple NEW-NEVER USED** – galleys and lavatories in various configurations and completeness.
- **20 NEW-NEVER USED** – overhead bins – secured/covered in wooden crate.



FLIGHTFLIX

matt@flightflix.com
1 (250) 862-1247

FLIGHTFLIX.COM

The advantage of working with Flight Flix is our **immediate availability** and **immense inventory** of assets.

In addition to this, Flight Flix is capable of **designing, configuring, and creating** just about **any arrangement of cabin class aircraft for any application.**

We can **completely replicate an in-service Boeing aircraft** with wings and tail feathers and up to 200 passenger seating in 80' of cabin, including business class, with any variation of seating required.

We can also construct smaller scale, open sided cabin sections as required.